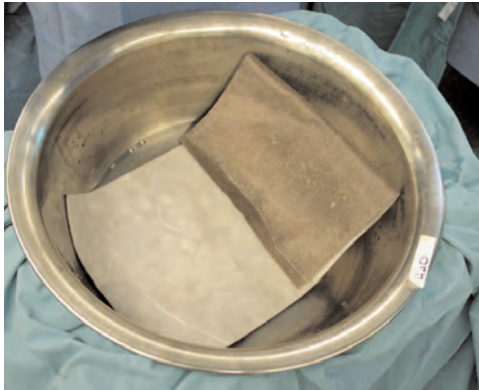


Silverlon® Protocols

Silverlon® Pad Dressing



For Silverlon® to be effective and non-adhering, the fabric must remain moist. Moisten the Silverlon® pad and in sterile water prior to application: insuring the padded backing is saturated.



Cover wound with the moistened Silverlon® Pad. Silver facing must be in direct contact with wound. Overlap slightly to prevent exposure of wound.



Check every 12 hours to insure the dressings remain moist. Saturation of gauze is not necessary.



Remove and replace outer gauze daily. Replacing with fresh gauze moistened with sterile water.



Soak Silverlon® dressings prior to removal. Do not forcefully remove the dressing. Silverlon® should be replaced every 2-5 days.